



# WHAT'S AROUND HERE?

*Shopping, Numbers & Colours - Beginner (KS1/2)*

**Learning outcomes:** To learn vocabulary to identify places around town.

## Game instructions



- Print “What’s around here?” (page 2 and 3) sheets for each pair.
- Put pupils into pairs.
- Drill pronunciation of places vocabulary with pupils.
- Ask pupils to cut out the images and words.
- Ask pupils to match the names and images of the places.
- Ask pupils to check their answers with a neighbour.
- Check answers with the whole class by nominating different pupils.

## Materials required:

- “What’s around here?” sheet (page 2 & 3)

## Game instructions



- Print “Places” (page 4) sheet for each pupil.
- Give each pupil a copy of “Places” sheet (page 4).
- Ask pupils to complete their worksheet.
- Ask pupils to check their answers with a neighbour.
- Check answers with the whole class.

## Materials required:

- “Places” (page 4)

### Tip!

Play charades! Give each pupil a card - they act it out, while the other pupils guess.



Created by the FlashAcademy® Education Team

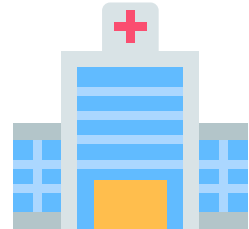
**Do you have an EAL resource idea?** If so, we’d love to hear from you. Send your resources/ideas/ sketches to [team@flashacademy.com](mailto:team@flashacademy.com) and if selected, we’ll design it up for you and share it with the EAL community.

More resources like this available on the FlashAcademy Dashboard at [edu.flashacademy.com](https://edu.flashacademy.com).



# WHAT'S AROUND HERE?

*Shopping, Numbers & Colours - Beginner (KS1/2)*



**bus  
station**

**shopping  
centre**

**library**

**restaurant**

**hospital**

**school**

Created by the FlashAcademy® Education Team

**Do you have an EAL resource idea?** If so, we'd love to hear from you. Send your resources/ideas/sketches to [team@flashacademy.com](mailto:team@flashacademy.com) and if selected, we'll design it up for you and share it with the EAL community.

More resources like this available on the FlashAcademy Dashboard at [edu.flashacademy.com](https://edu.flashacademy.com).



## PLACES

*Shopping, Numbers & Colours - Beginner (KS1/2)*

You buy clothes from a .

You visit the doctor at a .

You borrow books from a .

You can go swimming at a .

You pray at a .

You learn about historical facts and objects at a .

You can buy some chocolate from a .

You order a meal at a .

You study at a .

You can take a bus from a .

You can board a train from a .

You can walk a dog at a .

school

hospital

shopping centre

park

church

bus station

leisure centre

train station

library

museum

corner shop

restaurant

Created by the FlashAcademy® Education Team

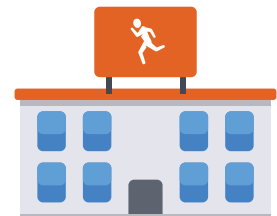
**Do you have an EAL resource idea?** If so, we'd love to hear from you. Send your resources/ideas/sketches to [team@flashacademy.com](mailto:team@flashacademy.com) and if selected, we'll design it up for you and share it with the EAL community.

More resources like this available on the FlashAcademy Dashboard at [edu.flashacademy.com](https://edu.flashacademy.com).



# WHAT'S AROUND HERE?

*Shopping, Numbers & Colours - Beginner (KS1/2)*



**church**

**park**

**train  
station**

**corner  
shop**

**leisure  
centre**

**museum**

Created by the FlashAcademy® Education Team

**Do you have an EAL resource idea?** If so, we'd love to hear from you. Send your resources/ideas/sketches to [team@flashacademy.com](mailto:team@flashacademy.com) and if selected, we'll design it up for you and share it with the EAL community.

More resources like this available on the FlashAcademy Dashboard at [edu.flashacademy.com](https://edu.flashacademy.com).