

# MY STORY!

English Language - Beginner (KS1/2)

**Learning outcomes:** To be able to write a story.

## Instructions:



- Print “My Story!” (pages 2–8) for each pupil.
- Staple “My Story!” into a booklet.
- Give each pupil a copy of the “My Story!” booklet.
- Ask pupils to imagine a story.
- Ask pupils to fill out the booklet.
- Ask pupils to read each other’s stories.
- Ask a pupil to read their story aloud to the whole class.

## Materials required:

- “My Story!” (pages 2–8)

## Tip!

Have pupils draw a picture to go with their story and stick around the room.



Created by the FlashAcademy® Education Team

**Do you have an EAL resource idea?** If so, we’d love to hear from you. Send your resources/ideas/sketches to [team@flashacademy.com](mailto:team@flashacademy.com) and if selected, we’ll design it up for you and share it with the EAL community.

More resources like this available on the FlashAcademy Dashboard at [edu.flashacademy.com](https://edu.flashacademy.com).

# MY STORY!

Draw your front cover

**NAME:** \_\_\_\_\_

**DATE:** \_\_\_\_\_

Created by the FlashAcademy® Education Team

**Do you have an EAL resource idea?** If so, we'd love to hear from you. Send your resources/ideas/sketches to [team@flashacademy.com](mailto:team@flashacademy.com) and if selected, we'll design it up for you and share it with the EAL community.

More resources like this available on the FlashAcademy Dashboard at [edu.flashacademy.com](https://edu.flashacademy.com).

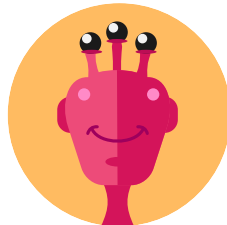
# SETTING

Draw a picture of where your story takes place. What can you see?  
Label your picture and use describing words.



# CHARACTERS

Draw and label your main character.



Describe your main character. How does your character behave?

---

---

---

---

---

---

**What problem does your main character experience?  
How are you going to solve the problem?**

---

---

---

---

---

---

---

---

---

---

**Who are the other characters in your story?  
Draw them and write about them. What is their role in your story?  
How do they behave?**

# TIME CONNECTIVES

How does your story begin? Think of a time connective to start your story.

---

---

---

---



**Practise!**

Write your opening sentence.

---

---

---

---

What happens in the middle of your story?  
Think of a time connective to use in the middle of your story.

---

---

---

---

---

---

---

---

---

---



# REFLECTION

How are you feeling about your ideas? Circle an image that describes how you feel.



What could you do to make your story even better?

---

---

---

---

---

---

---

---

---

---

---

---

---

---

---



Write your story.



A series of horizontal blue lines for writing.